

OVERVIEW

CORTEX[®] REAM

Automate Reaming. Enhance Precision. Optimize Drilling Performance.

Why it Matters

Manual reaming is repetitive, time-consuming and can introduce variability that affects hole quality and drilling performance. Continuous manual input also diverts the driller’s attention from higher-value operational oversight and safety-critical tasks.

CORTEX[®] Ream automates the reaming process by integrating directly with the rig’s control system. With a single command, drillers can initiate automated reaming operations that efficiently condition the wellbore—reducing the risks of tight spots, ledges and stuck pipe. The system lowers fatigue and improves overall operational consistency.

Key Benefits

Automated Control

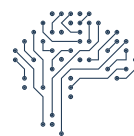
Initiate reaming with precision-controlled automation at the push of a button.

Steady Conditioning

Maintains a properly gauged hole while reducing risks such as tight spots, ledges and key seats.

Integrated Control

Connects seamlessly with existing rig systems for enhanced operational efficiency.



Operators Gain Measurable Benefits

Improved Consistency by removing variability from manual reaming

Reduced Fatigue by eliminating repetitive button-holding and joystick manipulation

Bottom Line

CORTEX Ream delivers automated, consistent wellbore conditioning that reduces variability in the reaming process.